

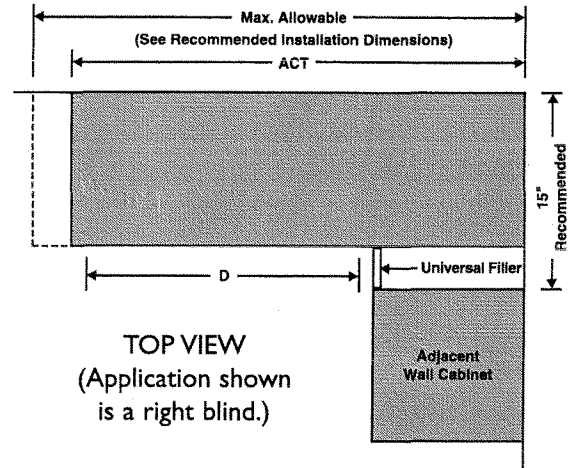
BLIND CABINET INSTALLATION INSTRUCTIONS

Blind Wall Cabinets: By Width

Cabinet	Act	Rec. Inst.	D
BW24	24"	24" - 27"	9"
BW30	30"	30" - 33"	12"
BW36	36"	36" - 39"	15"
BW42	42"	42" - 45"	12" (2)

Blind Walls Legend

- Act.** represents the **Actual** width of the cabinet.
- Rec. Inst.** represents the **Recommended Installation** dimensions.
- D** represents the actual width of the **Door** opening.

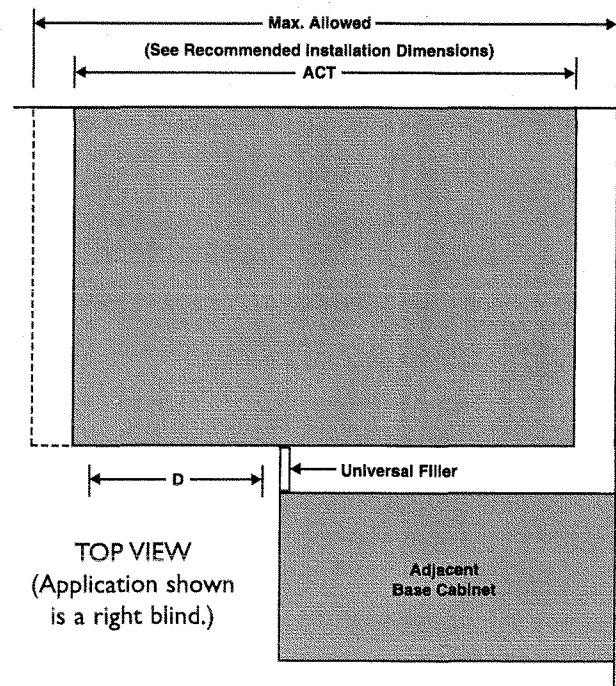


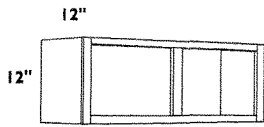
Blind Base Cabinets: By Width

Cabinet	Act	Rec. Inst.	D
BBC36	27"	36" - 39"	9"
BBC42	36"	42" - 45"	12"
BBC48	48"	48" - 51"	18"

Blind Walls Legend

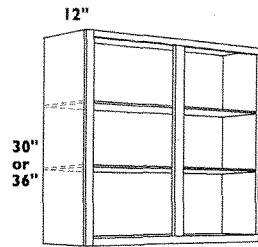
- Act.** represents the **Actual** width of the cabinet.
- Rec. Inst.** represents the **Recommended Installation** dimensions.
- D** represents the actual width of the **Door** opening.





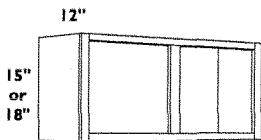
12" HIGH DOUBLE DOOR WALL CABINETS

W3012
W3612
W3912
W361224



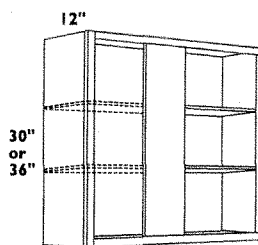
30"/36" HIGH DOUBLE DOOR WALL CABINETS

W2430-2 W2436-2
W2730 W2736
W3030 W3036
W3330 W3336
W3630 W3636
W3930 W3936
W4230 W4236



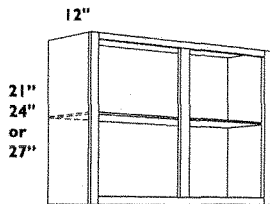
15" & 18" HIGH DOUBLE DOOR WALL CABINETS

W3015 W3018
W3315 W3618
W3615



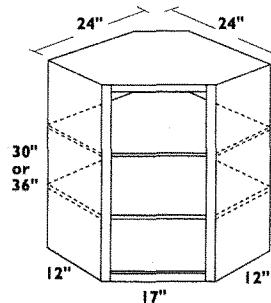
30"/36" HIGH SINGLE DOOR BLIND WALL CABINETS

BW2430 BW2436
BW3030 BW3036
BW3630 BW3636



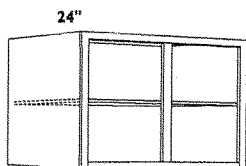
21", 24" & 27" HIGH DOUBLE DOOR WALL CABINETS

W3024 W3021 W3027
W3624



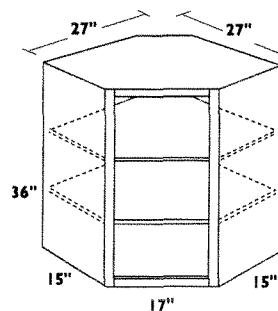
30"/36" HIGH SINGLE DOOR CORNER WALL CABINET

CW2430 CW2436



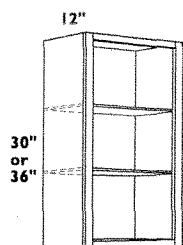
24" DEEP DOUBLE DOOR REFRIGERATOR CABINETS

W3612x24 W3618x24
W3624x24



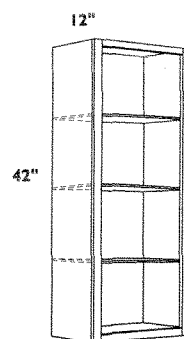
30"/36" HIGH x 15" DEEP SINGLE DOOR CORNER WALL CABINET

CW2736



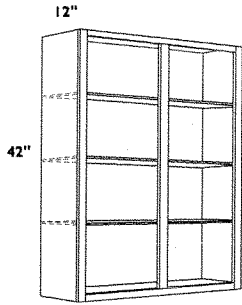
30"/36" HIGH SINGLE DOOR WALL CABINETS

W930 W936
W1230 W1236
W1530 W1536
W1830 W1836
W2130 W2136
W2430-1



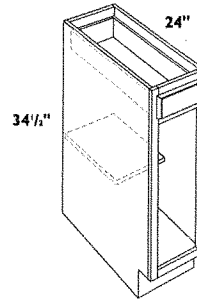
42" HIGH SINGLE DOOR WALL CABINETS

W942
W1242
W1542
W1842
W2142



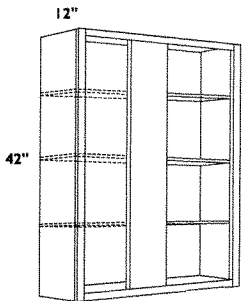
42" HIGH DOUBLE DOOR WALL CABINETS

W2442
W2742
W3042
W3342
W3642



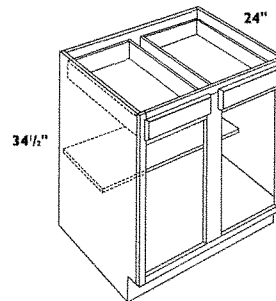
SINGLE DOOR & DRAWER BASE CABINETS

B12
B15
B18
B21
B24-1



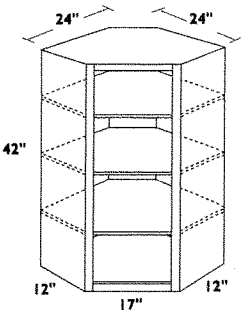
42" HIGH SINGLE DOOR BLIND WALL CABINETS

BW2442
BW3042
BW3642



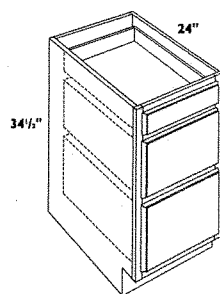
DOUBLE DOOR & DRAWER BASE CABINETS

B24-2
B27
B30
B33
B36
B39
B42



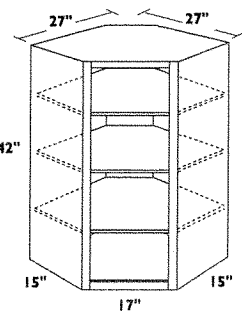
42" HIGH SINGLE DOOR CORNER WALL CABINET

CW2442



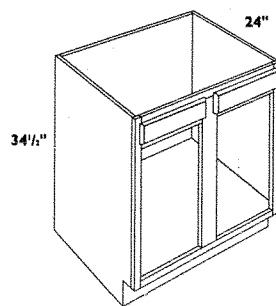
THREE DRAWER BASE CABINETS

DB12 DB24
DB15 DB30
DB18 DB36
DB21



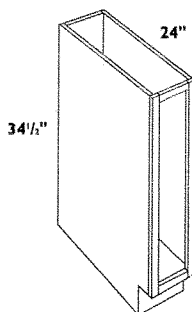
42" HIGH x 15" DEEP SINGLE DOOR CORNER WALL CABINET

CW2742



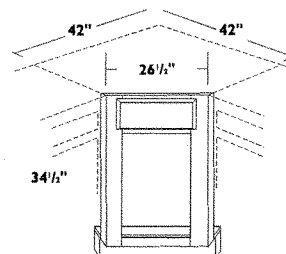
DOUBLE DOOR SINK BASE CABINETS

SB30
SB33
SB36
SB42



SINGLE DOOR (FULL HEIGHT) BASE CABINET

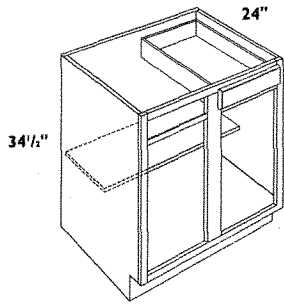
B9



SINGLE DOOR CORNER SINK FRONTS

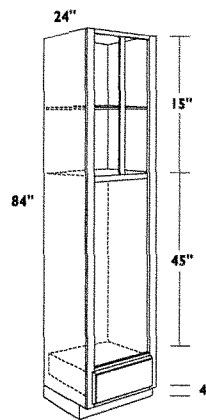
CSF42 L or R

DSB42 - COMPLETE CABINET



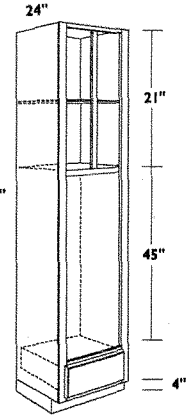
**SINGLE DOOR & DRAWER
BLIND BASE CABINETS**

BB36 - no drawer
BB42
BB48



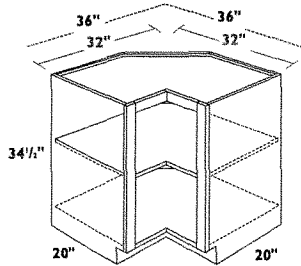
**DOUBLE
84" HIGH
1 DRAWER
OVEN
CABINETS**

OC3384D



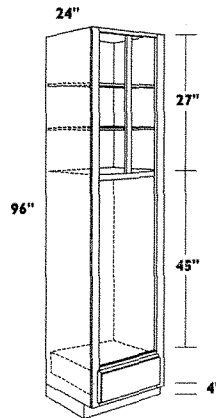
**DOUBLE
90" HIGH
1 DRAWER
OVEN
CABINETS**

OC3390D



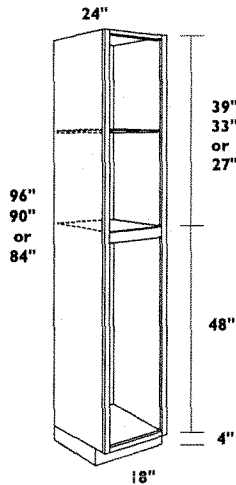
**EASY REACH
CORNER BASE CABINET**

ER36



**DOUBLE
96" HIGH
1 DRAWER
OVEN CABINETS**

OC3396D

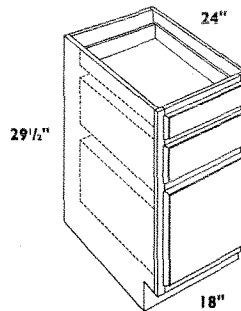


**96", 90" or 84" HIGH
x 18" WIDE SINGLE DOOR
UTILITY CABINETS**

Upper section of 96" tall cabinets
have 2 adjustable shelves

Note: Single door top and bottom

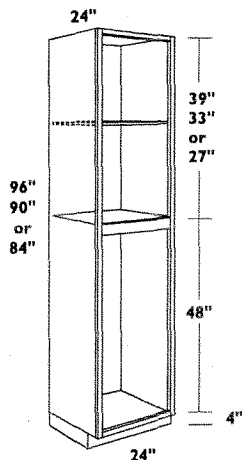
P-1884
P-1890
P-1896



**FILE DRAWER BASE
DESK CABINET**

FD18

**1 STANDARD TOP DRAWER
& 1 LARGE BOTTOM DRAWER**
DDB18

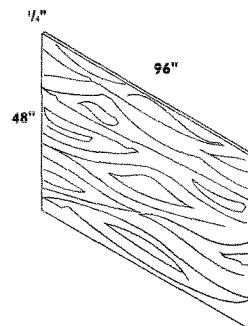


**96", 90" or 84" HIGH
x 24" WIDE BUTT DOOR
UTILITY CABINETS**

Upper section of 96" tall cabinets
have 2 adjustable shelves

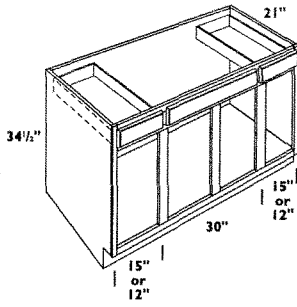
Note: Butt doors top and bottom

P-2484
P-2490
P-2496



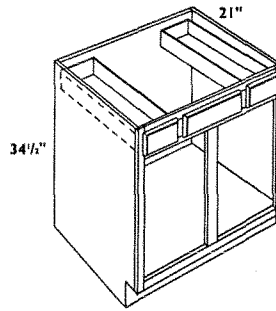
**96" HIGH x 48" WIDE
LONG-GRAIN PANEL**
BP48x96LG

**48" HIGH x 96" WIDE
SHORT-GRAIN PANEL**
BP96x48SG



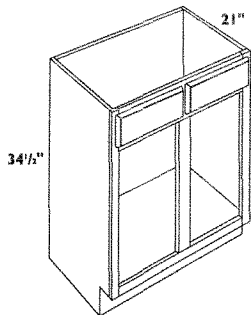
**21" DEEP x 34-1/2" HIGH
VANITY DRAWER
SINK CABINETS**

VSB60



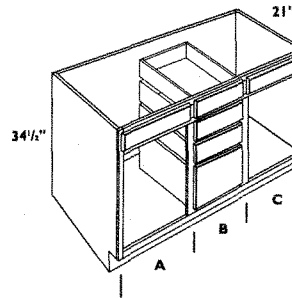
**21" DEEP x 34-1/2" HIGH
VANITY DRAWER
SINK CABINETS**

VSB36
VSB42
VSB48



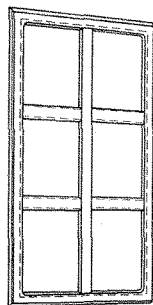
**21" DEEP x 34-1/2" HIGH
VANITY SINK CABINETS**

V27
V30
V33
V36
V42



**21" DEEP VANITY
x 34-1/2" HIGH DOUBLE
SINK DRAWER BASE
CABINETS**

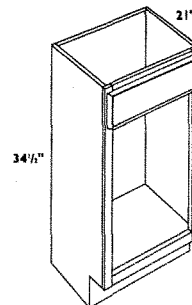
	A	B	C
VDB60	24"	12"	24"



MULLION DOORS

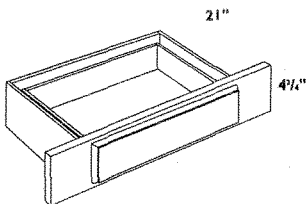
MD

Glass not included



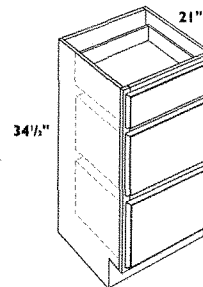
**21" DEEP x 34-1/2" HIGH
VANITY SINK CABINETS**

V24-1



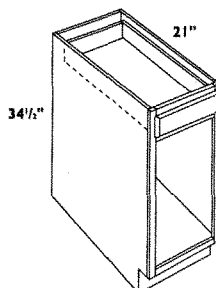
**SINGLE VANITY
DRAWERS**

KD24



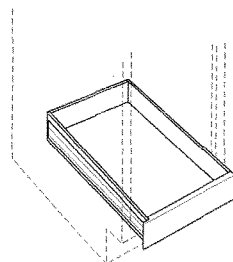
**21" DEEP
VANITY DRAWER
BASE CABINETS**

VDB12
VDB15
VDB18
VDB24



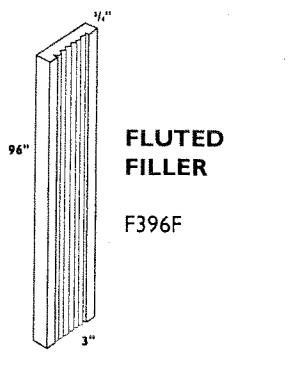
**21" DEEP VANITY
BASE CABINETS**

VB12
VB15
VB18

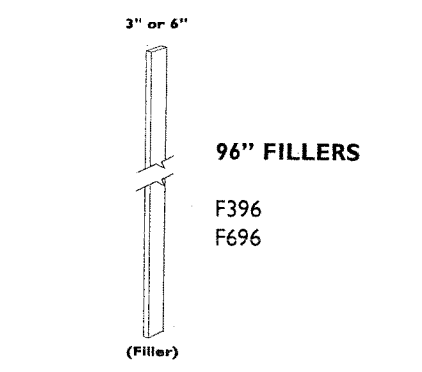


**PULL OUT
SHELF TRAYS**

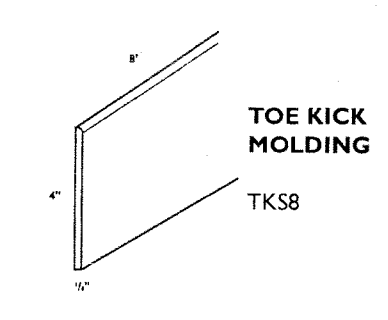
ROT B15
ROT B18
ROT B21
ROT B24
ROT B30
ROT B36



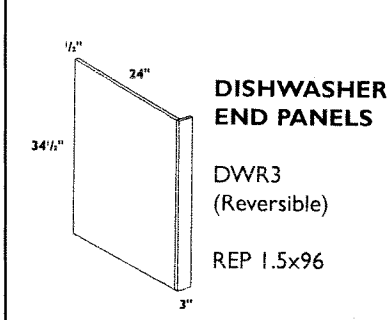
FLUTED FILLER
F396F



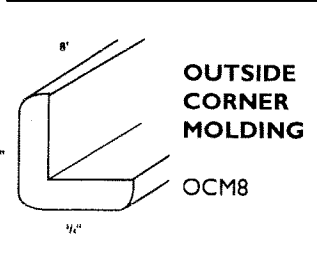
96" FILLERS
F396
F696



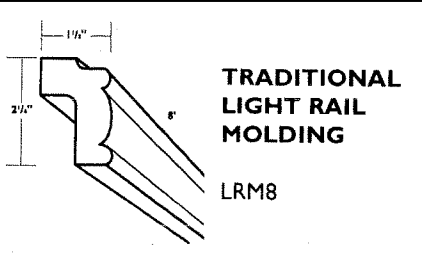
TOE KICK MOLDING
TKS8



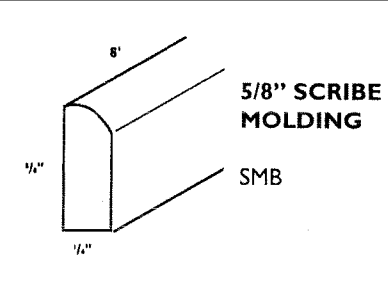
DISHWASHER END PANELS
DWR3
(Reversible)
REP 1.5x96



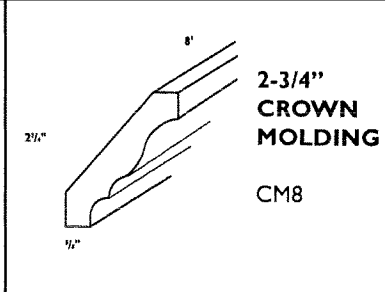
OUTSIDE CORNER MOLDING
OCM8



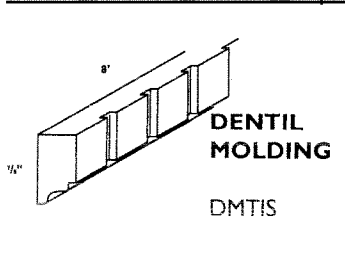
TRADITIONAL LIGHT RAIL MOLDING
LRM8



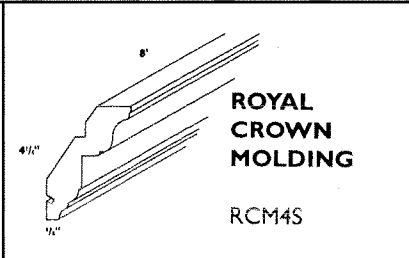
5/8" SCRIBE MOLDING
SMB



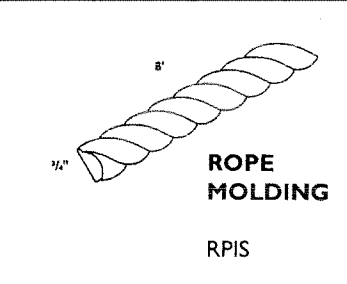
2-3/4" CROWN MOLDING
CM8



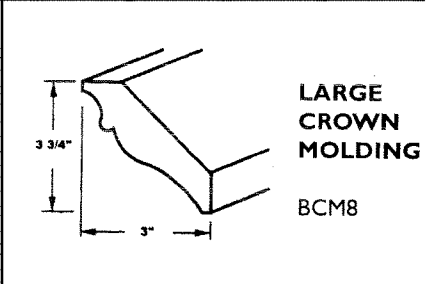
DENTIL MOLDING
DMTIS



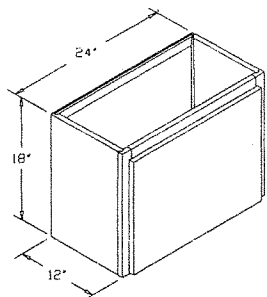
ROYAL CROWN MOLDING
RCM45



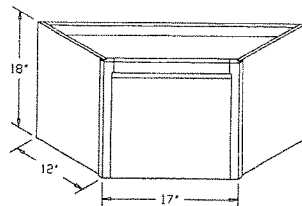
ROPE MOLDING
RPIS



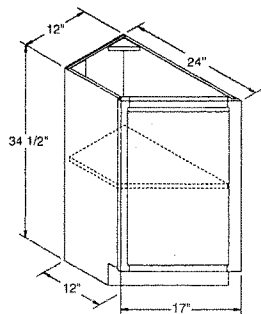
LARGE CROWN MOLDING
BCM8



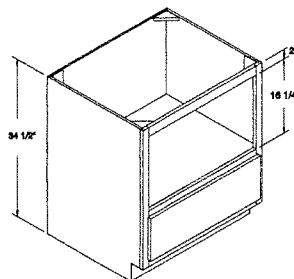
APPLIANCE GARAGE WITH DOOR
AGD2418-BD



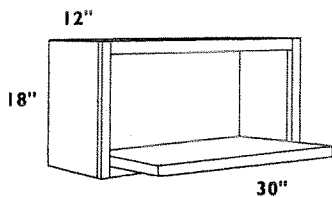
DIAGONAL APPLIANCE GARAGE
ADAG



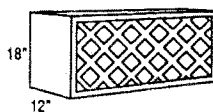
TRANSITIONAL ANGLED BASE WITH FULL HEIGHT DOOR
D-TAB12FHDL
D-TAB12FHDR



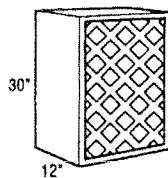
BASE MICROWAVE/DISH DRAWER CABINET
BM30



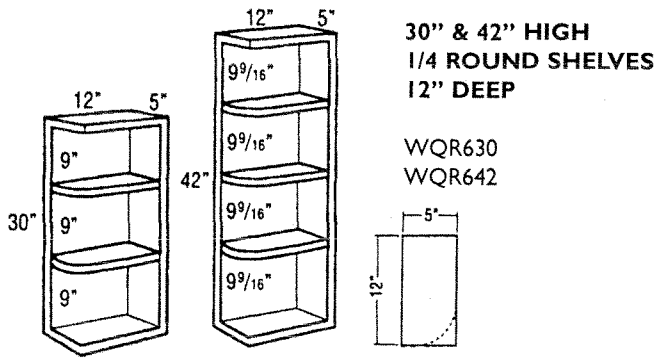
18" HIGH X 12" DEEP MICROWAVE CABINET
MWS3018x12



WALL WINE RACK 12" DEEP

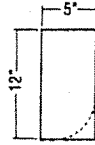


WR3018
WR1830

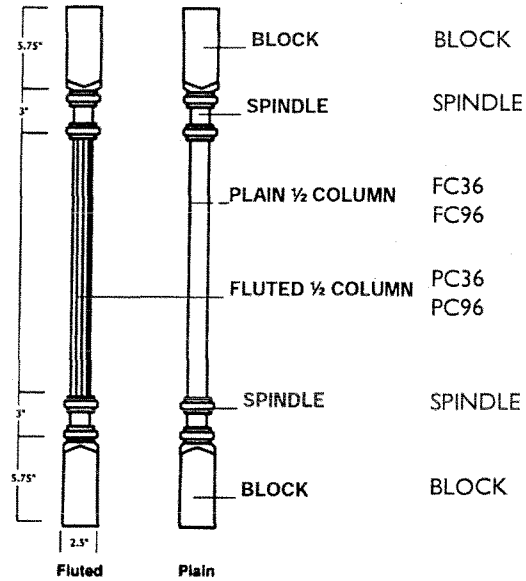


**30" & 42" HIGH
1/4 ROUND SHELVES
12" DEEP**

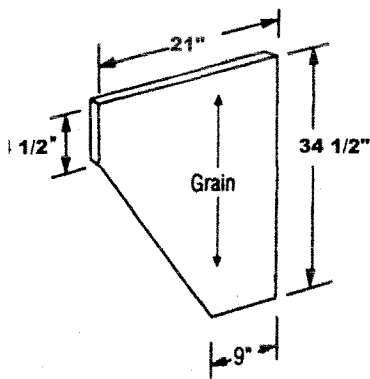
WQR630
WQR642



CREATE A PILASTER

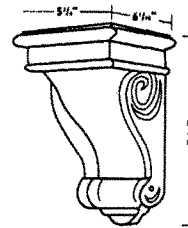


BLOCK	BLOCK
SPINDLE	SPINDLE
PLAIN 1/2 COLUMN	FC36 FC96
FLUTED 1/2 COLUMN	PC36 PC96
SPINDLE	SPINDLE
BLOCK	BLOCK



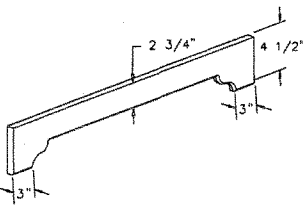
**VANITY DESK LEG
31-1/2" HIGH, 21" DEEP**

VDL2134 1/2



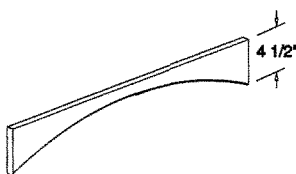
10" / 14" GRAPE CORBEL

GLCOR 10
GLCOR 14



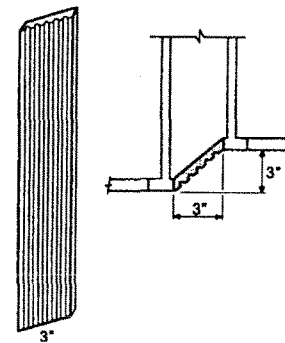
STYLE D MOLDING

D-V31D
D-V37D
D-V43D



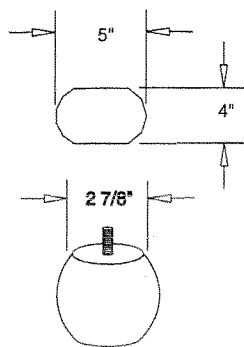
STYLE E MOLDING

D-V31E
D-V37E
D-V43E



ANGLED FLUTED FILLER

AFF330

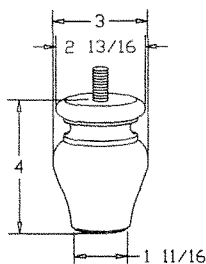


BUN FOOT MOLDING

BUNFOOT

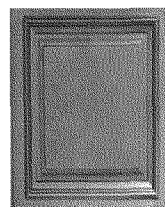
**TULIP BUN FOOT
MOLDING**

TBUNFOOT4



END PANELS

REP 1.5" x 96"
REP 3" x 96"
DWR 3"



DECO PANELS

WEP1230
WEP1231
WEP1236
WEP1242
WEP2430-1